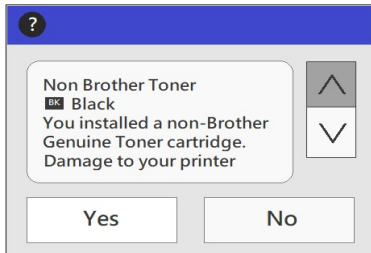


READ ME FIRST

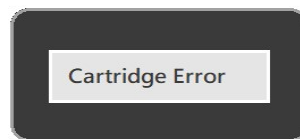
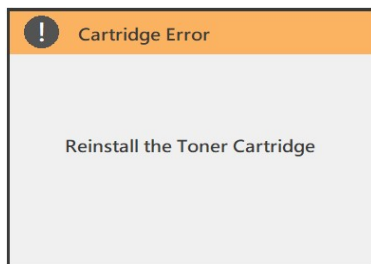
For use with Compatible Brother TN920 and TN830 series with new chip

Brother has incorporated serial code control technology into its chip design. The printer is designed to record and store all serial code information, preventing the reuse of duplicate serial codes.

It is normal for the printer to show "**Non Brother Toner**" message when installing compatible toner cartridges. Please click "**Yes**" to complete the cartridge replacement.

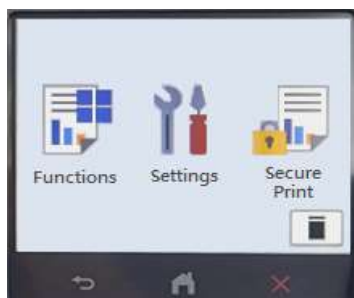


If "**445, 446**" or "**Cartridge error**" warning message occurs on your printer, please restarting the printer to switch the serial number to resolve the issue.

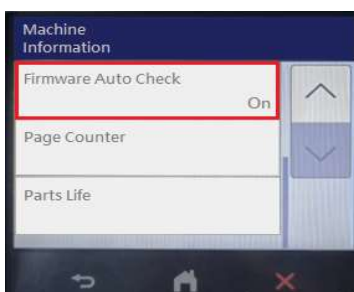


How to disable Auto Firmware update on your printer

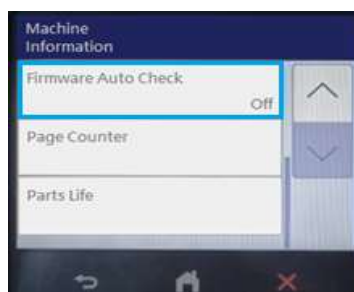
Oftentimes, OEM will release new firmware to block out serial codes used by the aftermarket chip, resulting in detecting errors and preventing users from using non-OEM toner cartridges. It's recommended to turn off the Auto Firmware update feature on the printer to avoid possible serial codes block caused by the new firmware update.



- Step 1. Go to **Home** screen on your printer and select **Settings**
- Step 2. Under **Settings** and select **All Settings**
- Step 3. Under **All Settings** and select **Machine Information**
- Step 4. Under **Machine Information** and select **Firmware Auto Check**
- Step 5. Under **Firmware Auto Check** and select **Off**



Factory system default



Auto Firmware update disable